



1



2

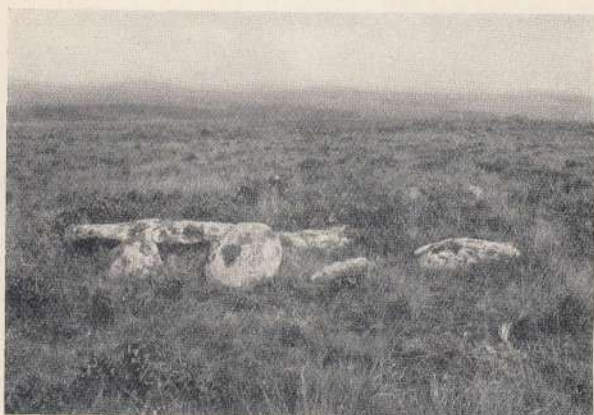


3

ROYAL HILL, PRINCETOWN.



1



2



3

"CROCK OF GOLD" AND BLAKEY TOR.

FORTY-SEVENTH REPORT ON BARROWS.

BY R. HANSFORD WORTH, RECORDER.

(Read at Lynton, 18th July, 1928.)

[*Transactions of the Devonshire Association for the Advancement of Science, Literature, and Art.* 1928.—Vol. lx. pp. 77-78.]

IN Vol. XL (Newton Abbot, 1908) of our *Transactions* I published plans of four kistvaens which lie on Royal Hill, near Princetown; and in Vol. XLIV (Exeter, 1912) I published a plan of a kistvaen which lies near the summit of a Tor south of the Blackabrook. I have in late years photographed these kistvaens, and the enclosing circles, and now offer some views by way of report.

Fig. 1, Plate V, shows the circle around the southernmost kistvaen on Royal Hill, the plan of which will be found in the Twenty-seventh Report, Vol. XL. The Ordnance Sheet No. is Devon, CVII S.W. The position is long. $3^{\circ} 56' 50''$ W., lat. $50^{\circ} 31' 53\frac{1}{2}''$ N.

Fig. 2, Plate V, shows the central kistvaen on Royal Hill, the plan of which is in the Twenty-seventh Report. Ordnance Sheet No. CVII S.W. Position, long. $3^{\circ} 56' 47\frac{1}{2}''$ W., lat. $50^{\circ} 32' 1\frac{3}{4}''$ N.

Fig. 3, Plate V, shows the circle around the northern kistvaen on Royal Hill, the plan is given in the Twenty-seventh Report. Ordnance Sheet No. CVII S.W. Position, long. $3^{\circ} 56' 46\frac{1}{2}''$ W., lat. $50^{\circ} 32' 4\frac{3}{4}''$ N.

Fig. 1, Plate VI, shows the kistvaen by the track on Royal Hill, the plan is given in the Twenty-seventh Report. Ordnance Sheet No. CVII S.W. Position, long. $3^{\circ} 57' 28''$ W., lat. $50^{\circ} 32' 25''$ N.

Fig. 2, Plate VI, shows the circle around this last-named kistvaen.

Fig. 3, Plate VI, shows the kistvaen near the summit of the Tor south of the Blackabrook (sometimes called Blakey

Tor). The plan is given in the Thirty-first Report, Vol. XLIV. The number of the Ordnance Sheet is Devon, CVII N.W., the position is long. $3^{\circ} 57' 29\frac{1}{2}''$ W., lat. $50^{\circ} 32' 41''$ N.

No additional information is available as to any of these, but it may be mentioned that the kistvaen near the track on Royal Hill is sometimes spoken of as "Crock of Gold."

R. H. WORTH.