

PLATE II

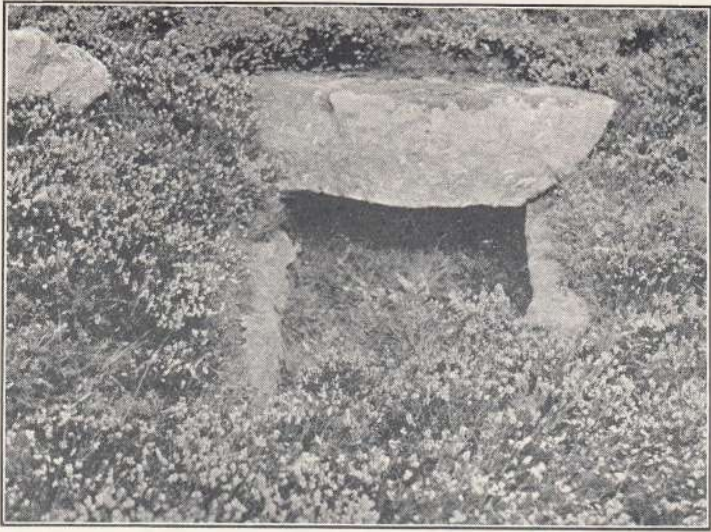


Fig. 1. KISTVAEN, HAMELDON.
View looking N. 36° E.

R. H. Worth.

HAMELDON.

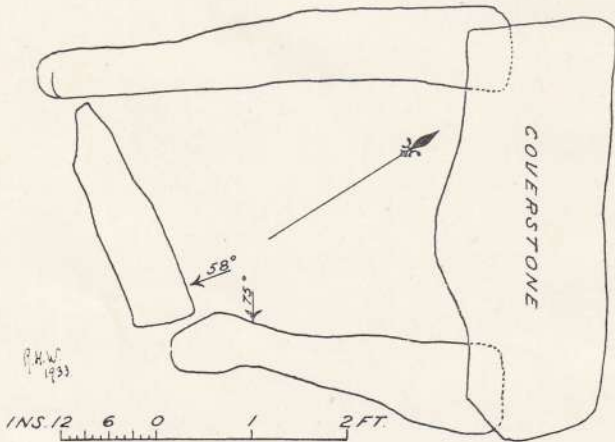


Fig. 2.

FIFTY-FOURTH REPORT ON BARROWS

BY R. HANSFORD WORTH, RECORDER.

(Read at Sidmouth, 26th June, 1935.)

KISTVAEN ON HAMELDOWN. On the eastern slope of *Hamel-down* lies a kistvaen which has escaped record. Three of the side-stones still stand, the fourth has been removed. The cover-stone remains, and is unusually small in comparison with the side-stones; it does not appear to have been split or in any way reduced in size. The kist has obviously been disturbed; the eastern side now leans inward at an angle of 75 degrees, and the southern stone is well out of the perpendicular with either of its companions.

One possible restoration would give a kist measuring two feet six inches square internally; and this restoration would follow from placing the southern stone in such manner as to make equal angles with its companions.

All square kistvaens present the difficulty that either direction may be regarded as the length, and there are accordingly two possible directions of length, between which discrimination is impossible. In the present instance these alternative directions are S.32°W. and S.58°E. respectively. It may therefore present an exception to the usual orientation.

The kist lies in a cairn of 24 feet diameter. The cover-stone is 4ft. 5ins. in length, and 1ft. 6ins. in width. The precise location of this kistvaen has not as yet been surveyed. Plate (II), fig. 1 gives a view looking N.32°E., and fig. 2 on same plate is a plan.

KISTVAEN ON LETHER TOR. This kistvaen was found by Mr. L. Button early in the present year. It is remarkable that it should have so long escaped notice. It lies but ten yards to the north of the road which leads from *Lowery* to *Lether Tor Bridge*, and two hundred yards east from *Cross Gate*.

Two side-stones and the north-west end-stone remain. The internal width of the kist varies between thirty-three inches at the north-west, and twenty-eight inches at the south-east where lies a stone twenty-nine inches in length which was almost certainly the missing end-stone. The internal length must have been three feet or a little more; the present depth, without excavation, is fourteen inches.

The direction of length lies S.40°E. The barrow in which the kist stands is surrounded by a close-set retaining circle of 16ft. 6ins. internal diameter.

The kist lies within the area covered by O.S. six-inch, Devon, CXII, N.E., the location being *lon.* 4°-1'-36", *lat.* 50°-30'-26". Plate (III) fig. 3 gives a view, looking N.39°W., and fig. 4 is a plan.

KISTVAEN IN BELLIVER NEWTAKE. This kistvaen was referred to by BURNARD in his *Notes on Dartmoor Kistvaens*, D.A. Trans. Vol. XXII, p. 203; it was excavated without result by the Dartmoor Exploration Committee in 1900 (*Committee's Seventh Report*, D.A. Trans. Vol. XXXIII, p. 136.) It lies within the area of O.S. Six inch, CVII, in *lon.* 3°-55'-10½", and *lat.* 50°-34'-17¼". There remain two side-stones, both leaning toward the centre line of the kist; one end-stone, and the cover-stone. The side-stones are 4ft. 6ins. and 4 feet length respectively. The end-stone is 3ft. 9ins. in length, and very unusually, but not without precedent, lies not between, but wholly outside the side-stones. The original width of the kist was probably about 2 feet. The length may have been from 2ft. 9ins. to 3 feet, (both inside measurements). The direction of length is S.25°E. The cover-stone measures 5 feet by 4ft. 3ins. The kist stands in the remains of a barrow, and there are some stones of a retaining circle of diameter about 15 feet.

Plate (IV) fig. 5 is a view, looking S.20°E., and fig. 6 is a plan.

KISTVAENS AND OTHER REMAINS IN LAKEHEAD NEWTAKE. *Lakehead Newtake* is singularly rich in remains. The remains of a kistvaen stand 230 yards west of the south-west angle of *Bellever Farm* enclosures, north of the track from *Cherrybrook* to *Bellever*. It lies within the remnant of its enclosing cairn. This was correctly shown on the first edition of the O.S. as a "Tumulus"; for some unknown reason it appears on the last edition as a "Hut Circle". The two side-stones of the kist alone remain, and of these one has been broken in height. The side-stones are respectively 5ft. 2ins. and 5ft. 3ins. in length, and that which is unbroken stands three feet above ground, with an unknown depth below. The direction of length is S.33°E. The cairn has a diameter of 48 feet, it has been much robbed, having evidently been used as a quarry. There are the remains of a retaining circle, which was apparently double. Even in ruin this is a fine example of the prehistoric grave. Traces of a stone row are connected with it (*Dartmoor Exploration Committee*, Rep. III. D.A. Trans. Vol. XXVIII, p. 183.) The precise location is: O.S. XCIX. S.E., *lon.* 3°-54'-39", *lat.* 50°-34'-47½". Plate (V) fig. 7 is a view, looking N.35°W., and fig. 8 is a plan.



Fig. 3. KISTVAEN, LEATHER TOR.
View, looking N. 29° W.

R. H. Worth

LEATHER TOR.

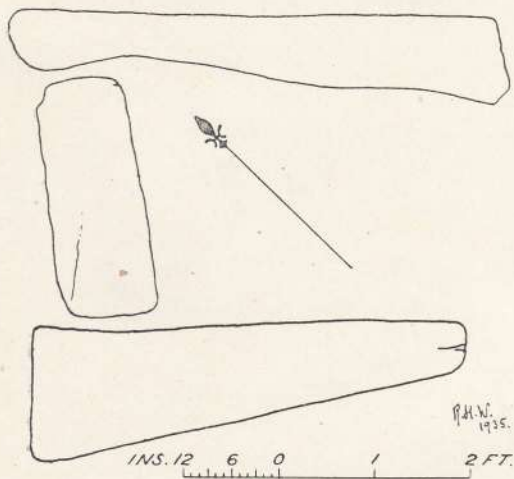


Fig. 4.

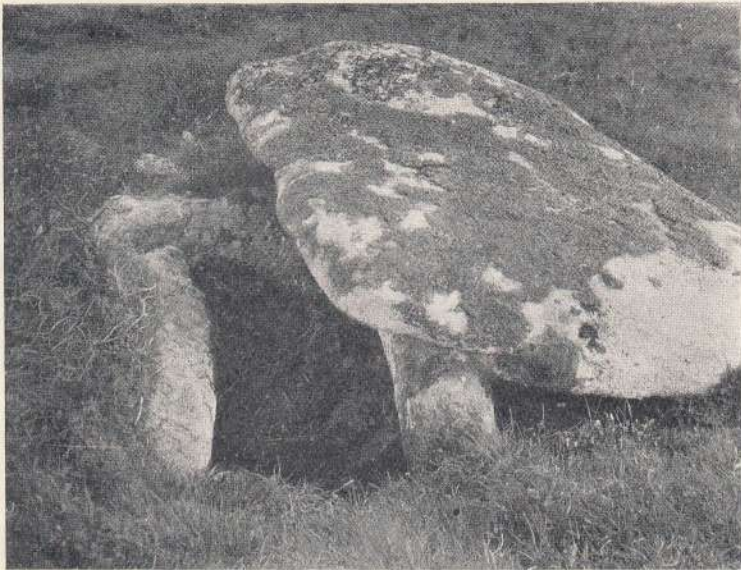


Fig. 5. KISTVAEN, BELLIVER NEWTAKE,
View, looking S 20° E.

R. H. Worth.

BELLIVER.

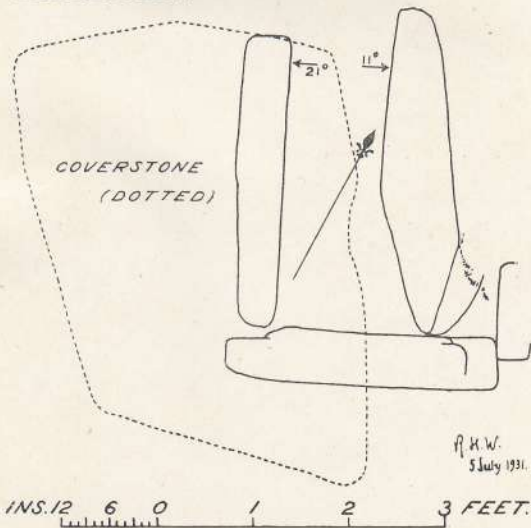


Fig. 6.

Barrow Report—To follow Plate III.



Fig. 7. KISTVAEN, LAKEHEAD NEWTAKE,
View, looking N. 35° W. R. H. Worth.

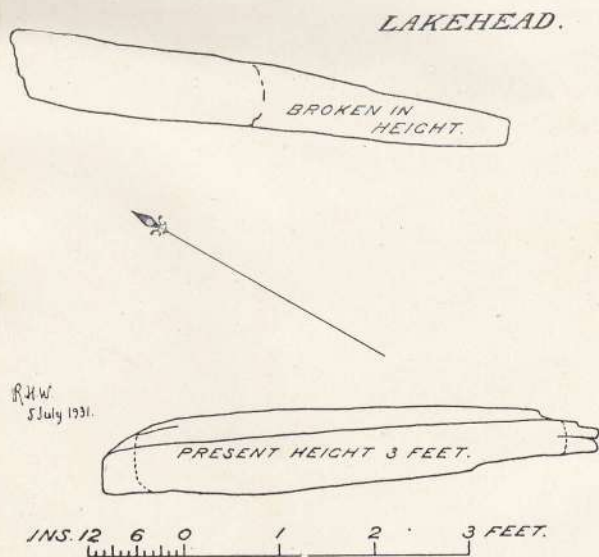


Fig. 8. PLAN OF KISTVAEN, LAKEHEAD NEWTAKE.

Barrow Report—To follow plate IV.

A KISTVAEN within a retaining circle stands O.S. Six inch XCIX, S.W., lon. $3^{\circ}55'0''$, lat. $50^{\circ}34'52\frac{1}{4}''$, a little to the south-west of the summit of *Lakehead Hill*.

One side-stone and the ends of the kist remain, together with the cover-stone. The length of the kist is 36 inches, and its width 22 inches. The direction of length is $S.73^{\circ}E.$ The retaining circle, which has an internal diameter of about 19 feet, consists of ten standing stones, and one fallen or broken. The largest stone in the circle stands 31 inches in height, and measures 34 inches by 7 inches at the ground (*Dartmoor Exploration Committee, Report III, D.A. Trans. Vol. XXVIII, p. 182*, but the illustration there referred to is

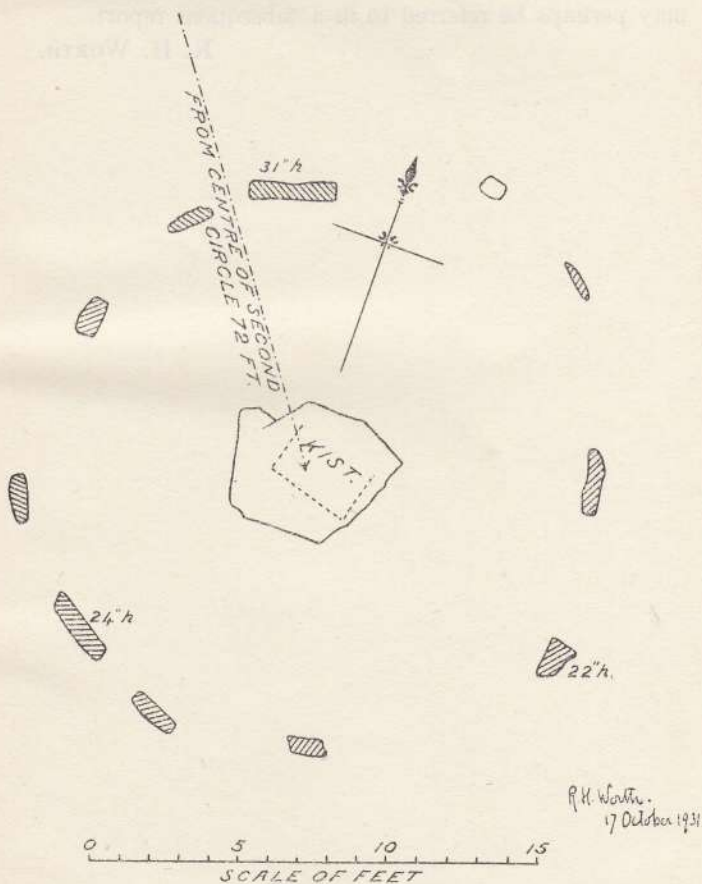


Fig. 10. PLAN OF KISTVAEN AND RETAINING CIRCLE,
LAKEHEAD NEWTAKE.

that of a kistvaen described on p. 182 of the same report). Plate (VI) fig. 9 is a view, looking due west, and fig. 10 in the text is a plan.

A RETAINING CIRCLE, without any visible traces of a kistvaen, lies 72 feet distant, centre to centre from the last, on a bearing N.35°W. Its internal diameter is about 22 feet. Ten stones are standing, of which the tallest is 34 inches high, and measures 40 inches by 8½ inches at the ground. There are but slight traces of the barrow or cairn. (*Dartmoor Exploration Committee*, Report III, D.A. Trans. Vol. XXVIII, p. 183).

Plate (VI) fig. 11 is a view, looking due west.

There are other graves on *Belliver* and *Lakehead*, which may perhaps be referred to in a subsequent report.

R. H. WORTH.



R. H. Worth.

Fig. 9. KISTVAEN AND RETAINING CIRCLE, LAKEHEAD NEWTAKE,
View, looking due West.



R. H. Worth.

Fig. 11. RETAINING CIRCLE, LAKEHEAD NEWTAKE,
View, looking due West.