

SEVENTY-SECOND REPORT ON BARROWS

BY C. E. BIRKETT DIXON, RECORDER

103. Peek Hill

In the "Stone Rows of Dartmoor," Part 1, *Trans. Devon. Assoc.*, Vol. 78, p. 296, was given a description of Stone Row No. 24, Sharpitor, Northern Flank, which starts at the west in a cairn and stretches for 366 feet to a blocking-stone. In line with the row and 255 feet from the blocking-stone is a cairn with a retaining circle of 11' 6" internal diameter, shown on 6 inch O.S. map SX 57 SE.

Following the discovery by Mr. G. M. Spooner of a kistvaen within this circle I made an investigation and found a kistvaen from which the coverstone and one endstone was missing.

The north-east sidestone, which is substantial, has a length of 51 ins. The direction of length of the kistvaen is N. 8° W.;

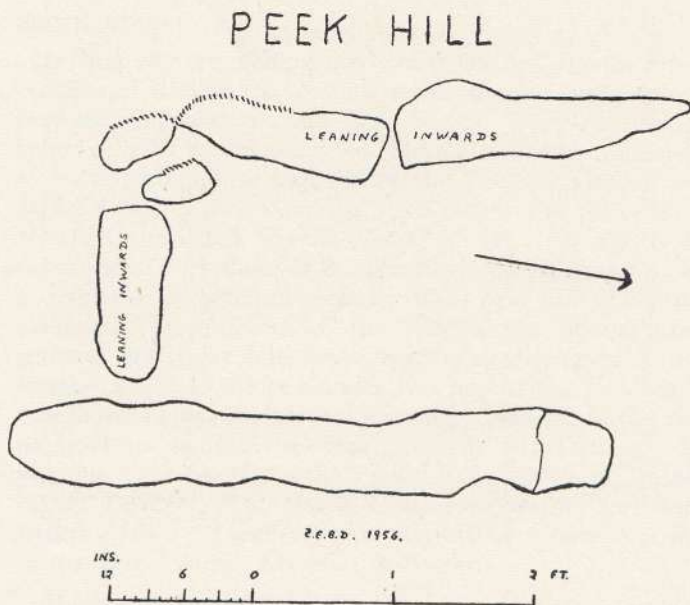
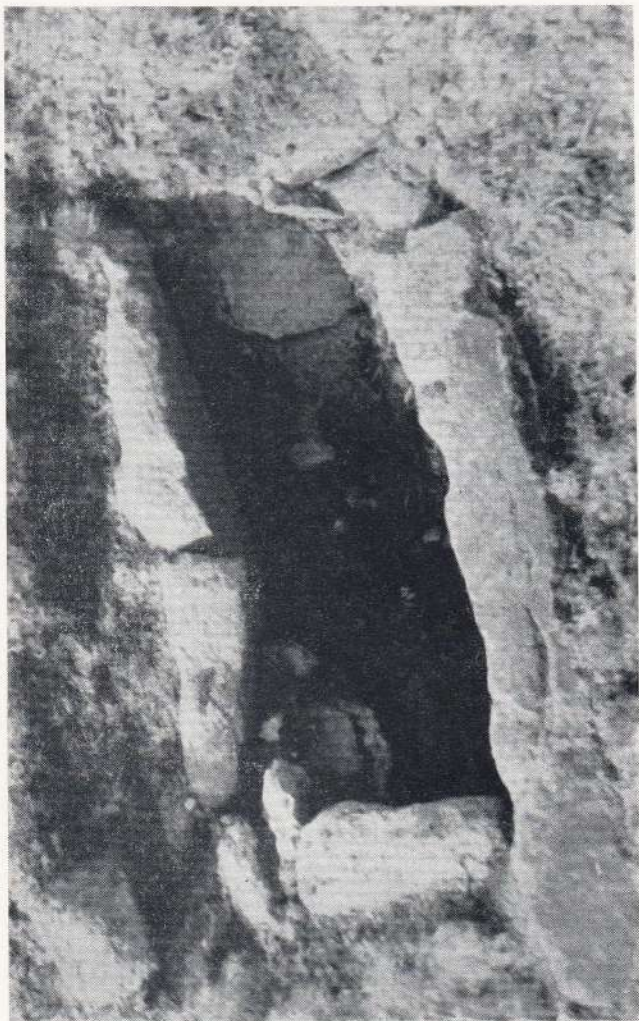


FIG. 1.



KISTVAEN 103, PEEK HILL.



KISTVAEN 106. LOWER GLASSCOMBE.

it has an average depth of 22ins., and its position is Lat. $50^{\circ} 31' 3\frac{1}{4}''$ N. Long. $4^{\circ} 2' 2''$ W. Nat. Grid Ref. SX 55837068.

Fig. 1 shows a plan of this kistvaen and a photograph taken from practically overhead.

106. Lower Glasscombe

This kistvaen was reported to me by Mr. R. C. E. Carpenter and was first visited a week later by the Plymouth and District Branch of the Devonshire Association who had by chance arranged a meeting in the neighbourhood.

The site lies some 400 feet up the lower slopes of Glasscombe Ball, from the West Glaze Brook 1,000 feet upstream from Glaze Meet, at an elevation of *c.* 875 feet.

There is a very slight trace of a mound and scattered rocks indicate the remains of a cairn, although there is not sufficient evidence to suggest the existence of a retaining circle.

Only one sidestone and one endstone now remains with the

LOWER GLASSCOMBE

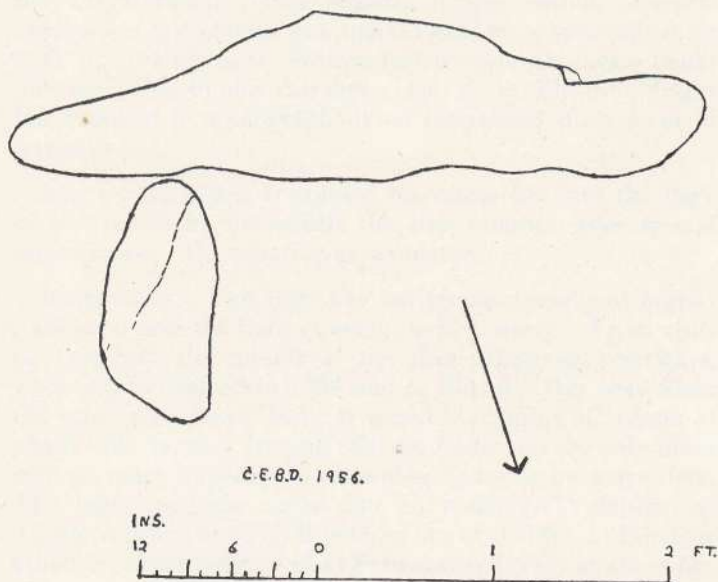


FIG. 2.

coverstone lying 11 feet away to the south-east. The overall dimensions of the coverstone are 49ins. x 24ins.

The length of the sidestone is 48ins. and the endstone $16\frac{1}{2}$ ins. The average depth of the kistvaen is 32ins. and the direction of length N. 72° W. Its position is Lat. $50^{\circ} 25' 43''$ N. Long. $3^{\circ} 52' 47''$ W. Nat. Grid Ref. SX 66516050.

Fig. 2 gives a plan of the kistvaen and a photograph taken from the north-west.

Corrigenda

The names of the kistvaens shown in the 71st Report on Plate 17 and at the foot of plate 18 have inadvertently been transposed.